

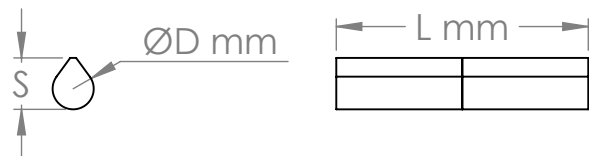
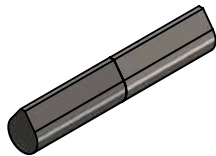
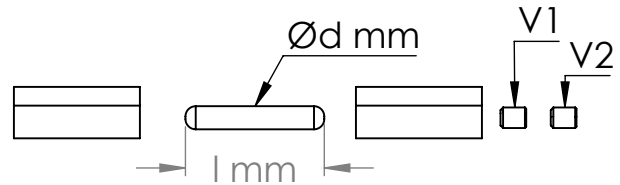
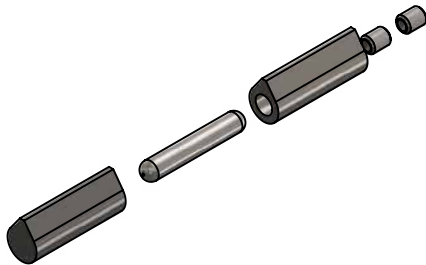
# 08R4100

## PAUMELLE BOUTS PLATS FLAT-ENDED HINGE

Réglable en hauteur (1D) / Adjustable in Height (1D)

L	PROFIL / PROFILE ●●●			AXE / PIN (Y) ●●●		VIS / SCREW ●		ACCESSOIRES / ACCESSORIES
	D	S		l	d	V1	V2	Graisseur / Lubricating fitting
60	10	12		39	6	M05x05	M05x05	●●●
80	13	16		47	7	M06x05	M06x05	●●●
100	16	20		55,5	9	M08x10	M08x10	●●●
120	16	20		55,5	9	M08x10	M08x10	●●●
140	20	25,3		68	11	M10x16	M10x16	●●●
160	20	25,3		87	12	M10x16	M10x16	●●●
180	20	25,3		106	13	M12x16	M12x16	●●●
200	23	29		115	16	M12x20	M12x16	●●●

Toutes les pièces sont interchangeables / All parts are interchangeable



● Acier / Steel ● Acier zingué / Zinc-plated steel ● AISI 303 ● AISI 304 ● AISI 316 ● Laiton / Brass ● Aluminium ● Inox

Ce plan est la propriété exclusive de PAUMELLES LIEGEOISES. Toute reproduction, toute diffusion même partielle est formellement interdite.  
This drawing is the sole property of PAUMELLES LIEGEOISES. Any reproduction, distribution, in part or as a whole, is prohibited.